

ROUTT NATIONAL FOREST

Support Our Sponsors



Printed By:
HENRY WURST
INCORPORATED

GRAND LAKE SNOWMOBILE TRAIL SYSTEM

- Basic Rules of the Trail:**
- 1) Don't drink and ride
 - 2) Obey speed limits
 - 3) Respect private property
 - 4) Maintain a safe following distance
 - 5) Stay to your side of the trail
 - 6) Keep the trail clear -
 - a. Don't stop on blind turns
 - b. Don't park double on the trail
 - 7) Ride to your ability
 - 8) Don't ride alone

EMERGENCY 911
Grand County Sheriff's Office (970) 725-3143
Rocky Mountain N.P. (West Side) (970) 627-3471
Town of Grand Lake (970) 627-3435
U.S. Forest Service (Grand) (970) 885-4100

AVAILANCHE POTENTIAL
Avalanche Center (Denver) (303) 499-9650

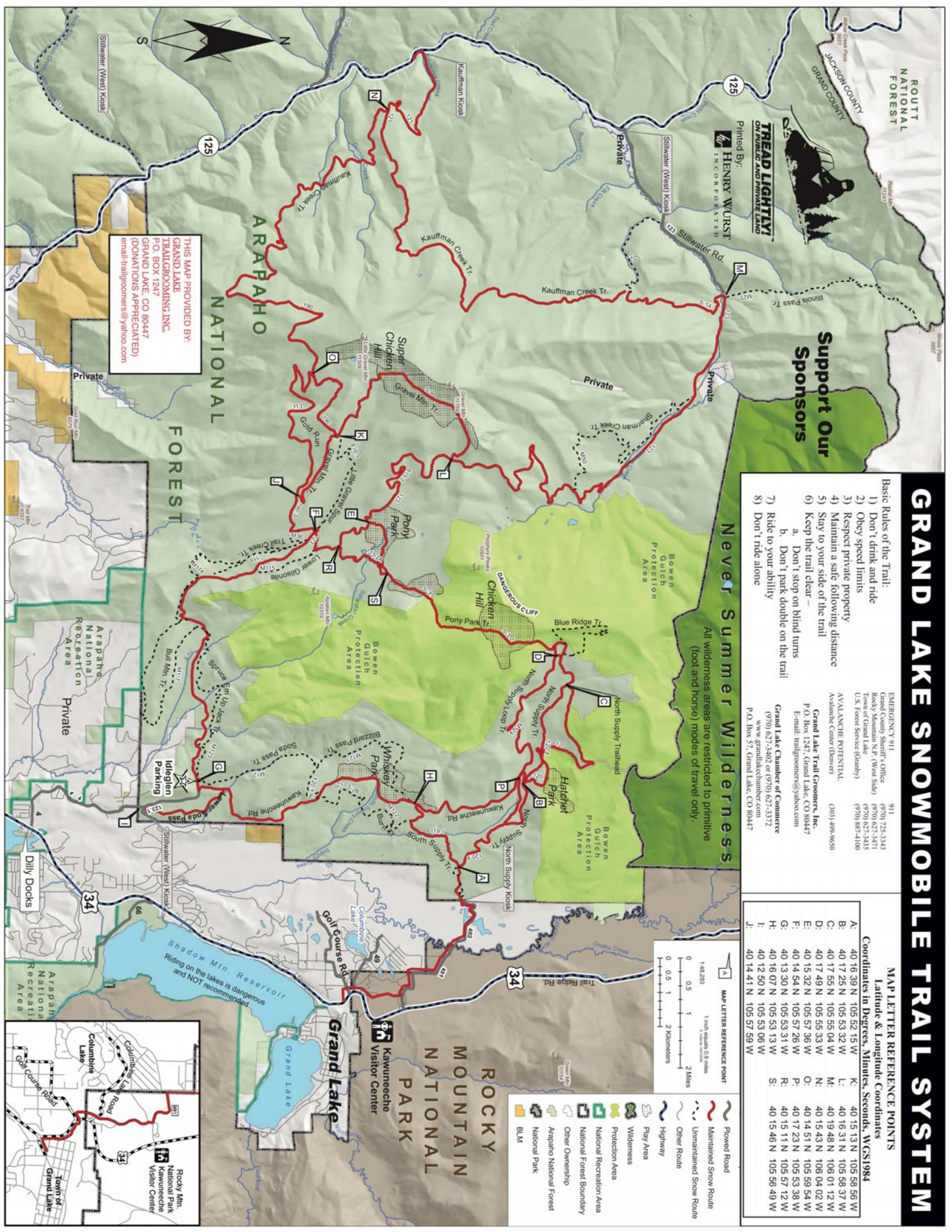
Grand Lake Trail Coopers, Inc.
P.O. Box 1247, Grand Lake, CO 80447
E-mail: trailcoopers@yahoo.com
(970) 627-3402 or (970) 627-3372
www.grandlaketrailcoopers.com
P.O. Box 57, Grand Lake, CO 80447

MAP LETTER REFERENCE POINTS
Latitude & Longitude Coordinates
Coordinates in Degrees, Minutes, Seconds, WGS1984

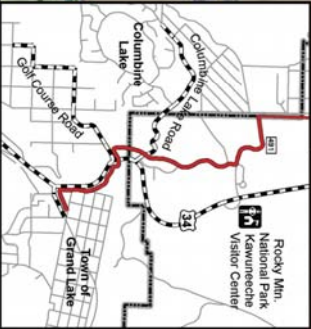
A:	40 16 39 N	105 52 15 W	K:	40 15 13 N	105 58 56 W
B:	40 17 25 N	105 53 32 W	L:	40 16 31 N	105 58 37 W
C:	40 17 55 N	105 55 04 W	M:	40 19 48 N	106 01 12 W
D:	40 17 49 N	105 55 33 W	N:	40 15 43 N	106 04 02 W
E:	40 15 52 N	105 57 36 W	O:	40 14 51 N	105 59 54 W
F:	40 14 54 N	105 57 26 W	P:	40 17 23 N	105 53 36 W
G:	40 13 30 N	105 53 31 W	R:	40 15 11 N	105 57 12 W
H:	40 16 07 N	105 53 13 W	S:	40 15 46 N	105 56 49 W
I:	40 12 50 N	105 53 06 W			
J:	40 14 41 N	105 57 59 W			

Never Summer Wilderness

All wilderness areas are restricted to primitive (foot and horse) modes of travel only.



THIS MAP PROVIDED BY:
GRAND LAKE TRAILCOOPERS, INC.
P.O. BOX 1247
GRAND LAKE, CO 80447
(DONATIONS APPRECIATED)
email: trailcoopers@yahoo.com



Shadow Min. Reservoir
Riding on the lakes is dangerous and NOT recommended.